

Søby Shipyard

www.sobyshipyard.com



Your vessel, our priority



FSC

www.fsc.org

MIX

Paper | Supporting
responsible forestry

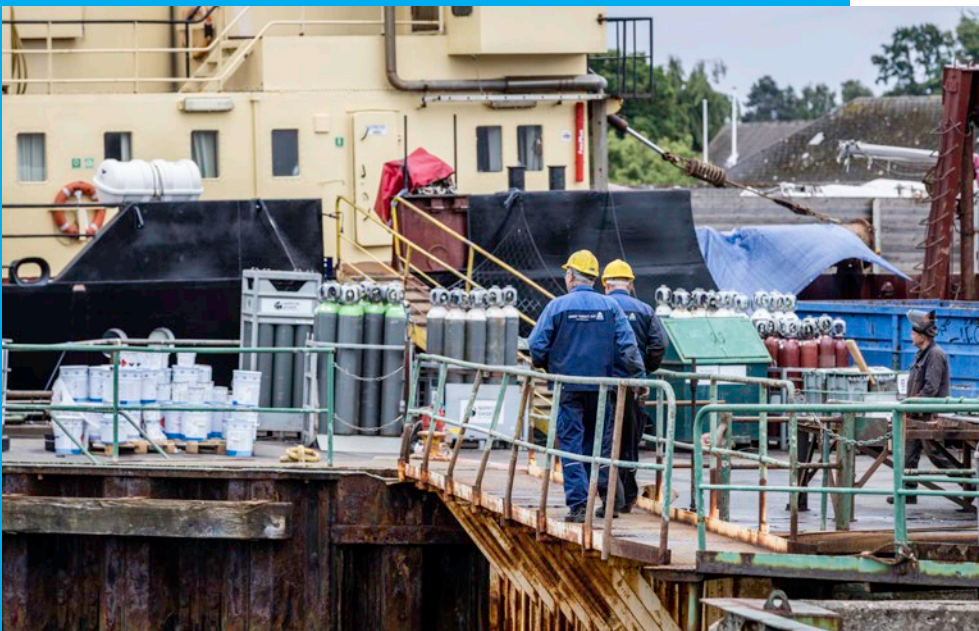
FSC® C134690

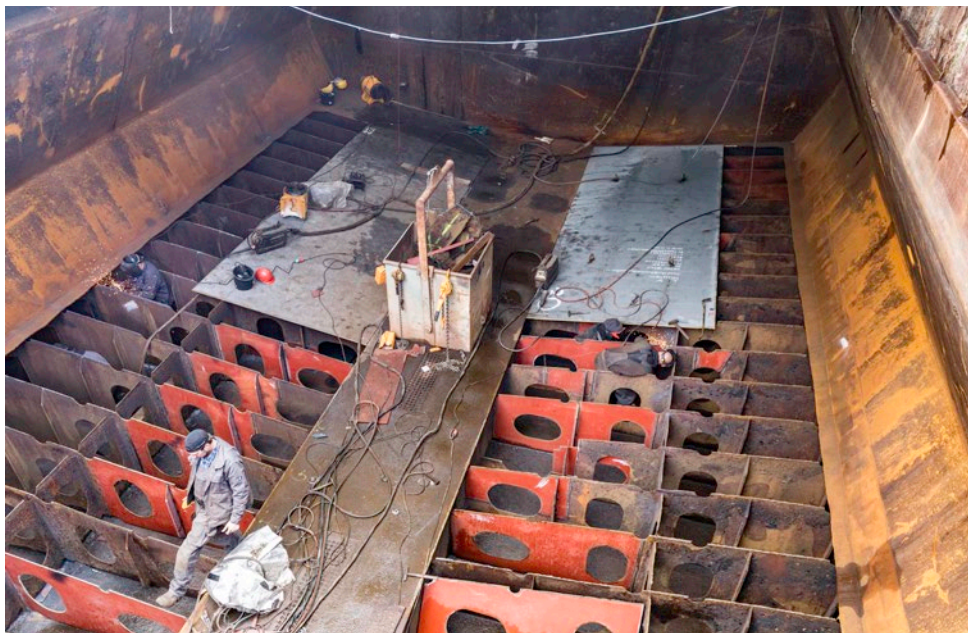
Who we are

Throughout its more than 90 years of history, Søby Shipyard has been following the trends of shipping and helped lead the development of the industry.

The founder Arthur Christian Jørgensen started repairing marine engines in 1931 and later in 1937 he began manufacturing his own engines. In the late 1940, production was expanded into ship building. At first the new buildings were delivered by slipway, but in 1967 the first dry dock was built and taken into use. Today Søby Shipyard offers ships repair and maintenance in three dry docks, of which dock 3, with its 140 x 24 meters, is the largest. The repair and maintenance tasks are carried out on naval vessels, tankers, general cargo ships, tugs, barges, offshore vessels, and many other special purpose vessels. Besides offering ships repair and maintenance Søby Shipyard has delivered more 110 new buildings within areas, such as fishing boats, ferries, tankers, general cargo ships and special purpose vessels.

For Søby Shipyard it has always been important to deliver the right craftsmanship of the highest quality, at the agreed time. Furthermore, the yard has during the recent years had a special focus on creating a sustainable future for marine transportation, by introducing innovative propulsion solutions through electrification and the introduction of green fuels. This has been reflected in the construction of semi and fully battery-powered ferries – most recently the fully electric ferry “Ellen”, which has been connecting Søby, Ærø and Fynshav on Als since 2019.





The history of Søby Shipyard



Arthur Christian Jørgensen founds his engine workshop



Expansion of the shipyard to 3600 m2 and construction of welding workshop



Administration and mechanical workshop is inaugurated on Dokvej 5

1976

The second dry dock is inaugurated

2006

The third and latest dry dock is built

2009

Current administration, warehouse and production hall is built



The hybrid ferry "Kanalen" is launched

1937

The first Søby Engine is developed and delivered



The first dry dock is built at Søby Shipyard



Dock 3 is extended to 140 meters

1953

Construction of a 40 meter long pier at the harbor in Søby



The trawler "Christian Smed" is launched as Søby Shipyard's first steel ship



The electric ferry "Ellen" is completed and delivered to Ærøfærgerne

Ellen

History was written when, in August 2019, "Ellen" the first fully electric ferry was deployed on the route between Søby, Ærø and Fynshav on Als. "Ellen" was built at Søby Shipyard as part of the EU, Horizon 2020 project. The purpose was to build a medium size, fully electric, emission free ferry for the transportation of passengers, cars, and freight on a medium-length route (up to 22 nautical miles). The ferry has an overall length of 59.5 meters, and she can load 31 passenger cars or 4-5 trucks, as well as 147 passengers (196 during summer). "Ellen" is charged to 3.8 MWh when staying overnight in Søby, Ærø and on a return voyage from Søby, Ærø to Fynshav on Als and back again she consumes between 1.400-1.700 kWh.

The 22 nautical miles will take her just under two hours to complete and when arriving back in Søby, Ærø she will re-connect to the 4 MW charging station for a short (25 minutes) recharge. In that way she can handle six daily return trips and typically she will return to Søby, Ærø in the evening with a remaining battery capacity of 30%. There has been established several safety measures around "Ellen" which ensures that she never runs out of power before being able to call a port. One being that she carries a reserve capacity of 400 kWh for emergencies, and safe return to port. In early June 2022, "Ellen" set a new world record when she successfully sailed 50 nautical miles (92.6 km) on a single charge. That is twice the distance of what "Ellen" typically covers on her regular 22 nautical mile route, before she is offered a recharge, and, most importantly, it is the longest distance ever sailed on a single charge by an e-ferry designed for passenger and car transport.



Søby Skibselektro – your professional partner

During the last 50 years, we built our reputation in the industry through expertise, flexibility and competitive prices, always aiming at finding the optimal solution for the customer.

Søby Skibselektro carries out all types of electrical installations onboard ships, as well as sale and service of nautical equipment.

Dokvej 1 · DK-5985 Søby Ærø
Management / Workshop: +45 4010 1865 · Office: +45 6258 1375
sse@skibsel.dk · www.skibsel.dk



Skibsaptering, offshore-arbejde, transport, snedker- og tømmeropgaver

Nautic Wood er en tømrvirksomhed, som hovedsagelig laver skibsaptering rundt omkring i landet. Vi udfører også tømmer-snedkeropgaver på land og driver transportvirksomhed.

Vi er 20 ansatte og råder over et stort, moderne værksted, som ligger på havnen i Søby.

Ring, hvis du har brug for et godt tilbud.

CAPACITY

Engine repair and overhaul

Ships engines are a fundamental part of the history behind Søby Shipyard, and it is deeply founded in our DNA.

We inspect, repair, and maintain all mechanical and electronic systems, as well as carry out overhaul of all types of engines in our specialized on-site workshops.

Our large inhouse workforce, always delivers, the highest achievable quality, within the agreed deadline.

Examples of engine work:

- Repair of all types of main and auxiliary engines
- Inspection of turbochargers, fuel oil equipment and pumps
- Installation of hydraulics and piping systems
- Inspection and repair of thrusters and propeller systems

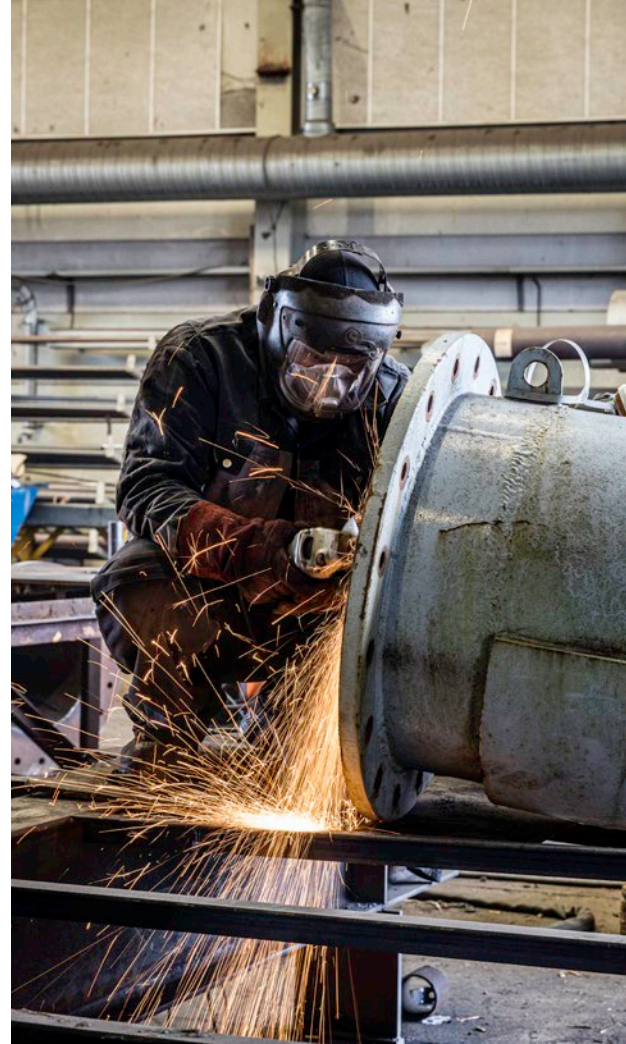


Maritime Engineering

- Engine overhauls
- Hydraulic works
- General maintenance
- Alpha Lubrication Service

Havnepladsen 4 · DK-5960 Marstal
+45 40 25 21 33
service@maritime-engineering.dk
www.maritime-engineering.dk





CAPACITY

Steel repair and construction work

Søby Shipyard has the largest facilities for handling steel repair and construction works in the Baltic Sea region. We handle all types of constructions – including emergency tasks, as well as tasks outside our own premises. Søby Shipyard has a lifting capacity of up to 90 tonnes, and we have a market-leading stock of steel and metal materials, allowing us to step in and complete any task at very short notice. Søby Shipyard specialises in cost-effective steel repairs, regardless of the size and budget. Our welders are well equipped for both largescale tasks and complex challenges, and they always have a keen eye on the details.

Our welding competencies include:

- Steel repair
- Aluminium
- Stainless steel
- Duplex steel
- Steel structures



LANGE JØRGENSEN

Ove Gjeddes Vej 14, DK-5220 Odense SØ
 Tel. 66 15 88 88 • info@langejorgensen.dk
 www.langejorgensen.dk

Safety · Quality · Teamwork · Fleksibility



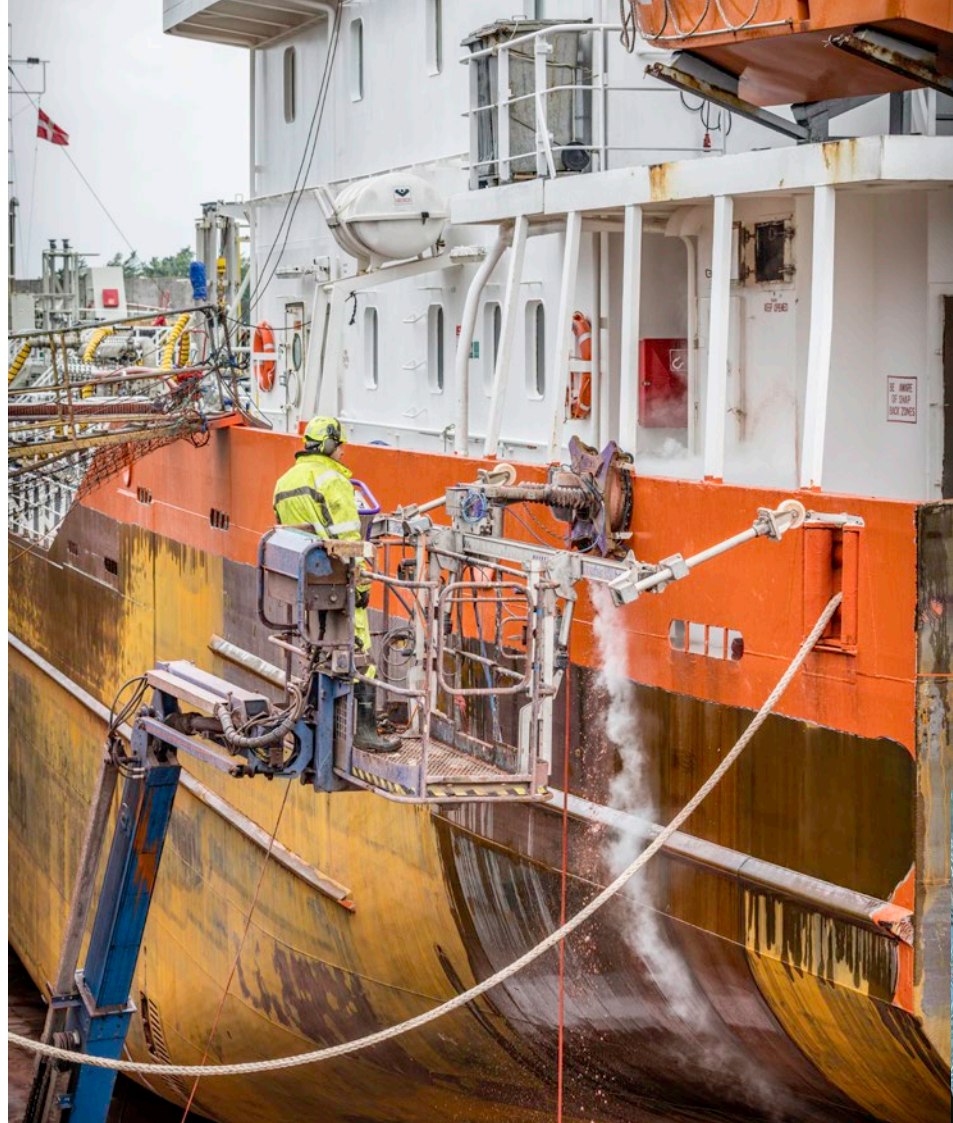
SERVICE A/S
 DENMARK

Call us 24/7
 + 45 24 42 00 12

mail@nmsdiving.dk
 WWW.NMSDIVING.DK

Approved by :
 LR-BV-DNV/GL

UWILD
 Mob-dock
 Repair-welding
 Propeller polish
 Cutting of propeller
 Cathodic protection
 Replacement of transducer
 Blanking of sea chest inlet



CAPACITY

Voyage repair

Søby Shipyard has a mobile unit (voyage crew) who takes pride in quick and efficient response, on our customers problems, whether they are large or small. Our well-equipped mobile unit moves out with transportable welding equipment and a complete set of tools needed for the job. From our location in the southwestern part of the Baltic Sea, we can quickly be available on-site in the whole of

the Scandinavian and North European region. Our voyage repairs are done both fast and efficient, regardless of size or nature of the problem. We guarantee that the repair works are done in accordance with applicable rules and regulations and that they meet the highest standards.

Do not hesitate to contact us for a free evaluation of any damage.

**Your supplier of professional
high-pressure cleaners
and equipment**



Tel. +45 3057 8192
pm@denjet.com
www.denjet.com

**PREFERRED SUPPLIER IN
MARINE VALVES, ACTUATORS
AND CONTROLS**

Deliveries day to day from stock



Sweden: +46 4306 99030
Denmark: +45 5250 6575
info@ceonab.se
www.ceonab.se

CAPACITY

Electrical and carpentry work and repairs

Søby Shipyard works closely with Søby Skibselektro and Nautic Wood who both companies are based within the Søby Shipyard premisses.

Søby Skibselektro offers installation, repair, and maintenance of all types of marine electricity solutions and Nautic Wood offers onboard outfitting of wheelhouses, passenger lounges and cabins, as well as carpentry work and insulation tasks of all kinds.

Services from Søby Skibselektro includes:

- Certified radio inspection and repair of all types of navigation and communication equipment
- Electrical installation in newbuilding's and repair and maintenance of electric engines and generators

Services from Nautic Wood includes:

- Outfitting, carpentry, roofing and new constructions of wheelhouses, passenger lounges and cabins.
- Insulation tasks in engine rooms, funnels, cold storages, and freezers.



BBC
coating

Overfladebehandling af stål • Sandblæsning
Metallisering • Maling • Tankrensning • Højtryksspuling

Kolloparken 69 • Frejlev • 9200 Aalborg SV
Tlf.: 98 34 35 96 • Mobil: 40 10 28 58
brian.bjoern@christensen.mail.dk

ZINC AND ALUMINIUM

BAC®

CORROSION CONTROL A/S

FÆRØVEJ 7-9, DK-4681 HERFØLGE
TEL: +45 7026 8900 • INFO@BACBERA.DK
WWW.BACBERA.DK

The team

A strong and well-trained workforce. Søby Shipyard is a professional and highly qualified supplier in the field of shipbuilding as well as the repair and maintenance of all vessel types. We solve all tasks to the highest standards and operate in accordance with the ISO 9001 and ISO 14001 guidelines.

At Søby Shipyard, we develop and train the workforce of the future ourselves.

We constantly have between 5 and 10 apprentices on our team, and we are proud of contributing to the continuation of great ship building skills to the maritime industry. At the same time, we also value knowledge and experience, therefore you can also meet a project manager approaching 70 years of age, at Søby Shipyard.



Sildevej 24 • DK-9970 Strandby • Tlf.: +45 98 48 13 00
info@strandbynet.dk • www.strandbynet.dk

Vognmand Søren Hansen

Salg af Sten og Grus
Container udlejes
Entreprenørarbejde udføres

Tranderupgade 8 · 5970 Ærøskøbing

Tlf.: 4046 4407

soren-hansen@hotmail.com

ÆRØ AUTO-CENTER

Skolevej 12 · Marstal

Tlf. 62 53 13 02

www.aeroeautocenter.dk



DANSK
BILBRANCHERÅD



SERVICE PARTNER

Søby Shipyard works with the UN Sustainable Development Goals

At Søby Shipyard we have a special focus on UN goals number 3, 4, 5, 9 and 12.



Responsible consumption and production

At Søby Shipyard we want to move in a more sustainable direction within consumption and production wherever it is technically and economically feasible.



Good health and well-being

At Søby Shipyard we want our employees to thrive and have a healthy life, throughout their whole lives.



Quality education

At Søby Shipyard we want our employees to have access to training throughout their entire careers.



Industry, innovation and infrastructure

At Søby Shipyard we want to promote sustainable operation and increased innovation in newbuilding, repair, and maintenance of ships.



Gender equality

At Søby Shipyard we have no men's or women's jobs

P. Pedersen & Søn
FRAGT- OG VOGNMANDSFIRMA

STYKGODS · BULK · KØL · FROST
Tel: 40 43 60 78
karsten@p-pedersen.dk · www.p-pedersen.dk

Stokkeby Smedeforretning
VVS & GAS

Frederiksbergvej 2,
5970 Ærøskøbing
6252 1179 / 2046 4529
stokkebysmede@mail.dk

P.J. Staal- og Skibsmontage ApS

Søndervej 202
5700 Svendborg
Tlf: +45 6220 6126
Mobil: +45 2014 4540
pj-contractors@mail.dk



Location

Søby Shipyard has an extremely central location in the southwestern part of the Baltic Sea, giving us an optimal location for serving shipowners and operators with new buildings, repair, and maintenance tasks for all types of vessels, in the Scandinavian and North European region. Our facilities include three dry docks as well as of 45,000 m² specialized premises with 5,000 m² of storage and workshops under roof, which can meet all needs of all types of vessels. Søby Shipyard has a long and proud tradition of delivering quality work, within the agreed deadline, to the agreed budget. We are known for our strong project management skills, which offers significant time and cost savings for both our customers and ourselves. We are committed on being available for our customers and partners throughout the year, 24/7/365.



ScanBlast

MERE END 30 ÅRS ERFARING

SANDBLÆSNING, LAKERING & METALLISERING

**Ingen opgave
er umulig!**

Ring og få et uforpligtende
tilbud i dag

2124 5836



Skal du have udført overflade- behandling af container eller skib?

Hos ScanBlast udfører vi forskellige former for overfladebehandlinger, herunder sandblæsning, industrilakering samt metallisering.

Vi er specialister inden for overfladebehandling af stål og metal. Vi har mange års erfaring med overfladebehandling

på utallige forskellige emner, så vi er altid klar på en udfordring. I samarbejde med kunden finder vi altid en løsning. Det vigtigste for os er at efterkomme vores kunders behov og ønske.

Vi har også en mobilafdeling, som gør det muligt for os at komme ud til dig, når behovet opstår.

Søby Shipyard

www.sobyshipyard.com



Dokvej 5, 5985 Søby, Ærø, Denmark

Tel. +45 6258 1123

E-mail: shipyard@shipyard.dk

www.sobyshipyard.com

ÆRØ LÅSESERVICE

- Nøgler til alle låse
- Låse til alle formål
- Låsesystemer
- Pengeskabe
- Brand- og dataskabe
- Oplukning
- Omstilling af låse
- Montering af låse
- Reparation af låse
- Tyverisikring
- Godkendt af Skafor
- Rådgivning

Tlf.: 6253 3949 | Mobil: 4034 9024

info@gilberg.dk | www.gilberg.dk

GERTSEN & OLUFSEN

BIOREACTORS

PART OF G&O MARITIME GROUP



BE PREPARED FOR THE FUTURE

We need to take better care of the world around us. More rules are being adopted to secure the future of our marine ecosystems.

With Gertsen & Olufsen solutions, you can operate anywhere without discharging harmful wastewater. G&O bioreactors treat black and grey wastewater from any vessel before it is let out into our oceans. The process is 100% biological and lives up to the strictest requirements.

Our wastewater solutions can be retrofitted on any vessel, even with limited space. We take pride in working closely with shipyards and shipowners on complex tailoring of our equipment to meet customer needs.

Contact us to learn more about how we can help you prepare for the future.

WWW.GOMG.DK/BIOREACTOR